

COMPLIMENTARY COPY
USA \$5.99 | CAN \$7.99
THE SPRING/SUMMER ISSUE

BEAUTIFUL DESIGN MADE SIMPLE

THE
Spring + Summer
EDITION

LAKESIDE LIVING
CRAFTING SERENITY BY THE SHORE

MUDROOM MEETS LAUNDRY
STYLISH EFFICIENCY FOR MODERN
LIVING

HERRINGBONE EVERYTHING
EXPLORE A TIMELESS FLOORING
PATTERN

CONTRIBUTORS



LISA KOOISTRA

Lisa Kooistra Design

Lisa Kooistra is the creative director and principal designer for Lisa Kooistra Design. This sought-after, multi-disciplinary Greater Toronto Area design firm is known for creating exceptional, well-curated interiors and custom builds.

lkdesigns.ca
@lisakooistradesigns



KELLY KOLE AND JOANN KANDRAC

Kandrac & Kole Interior Design

The principal designers of Kandrac & Kole Interior Design, Kelly Kole and Joann Kandrac, are known for their vibrant designs, dynamic personalities, and charitable work. Based in Atlanta, GA, the duo was voted among Atlanta's Top 20 Residential Interior Designers and has been featured on HGTV as well as in the New York Times and Better Homes & Gardens magazine. Kelly and Joann are also the voices behind the popular podcast, Inside Design with Kandrac & Kole, where they share their industry insights.

kandrac-kole.com
@kandrackole

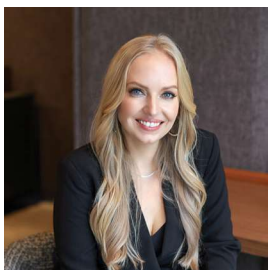


TRISH KNIGHT AND NICOLE VARGA

Knight Varga Interiors

Designers Trish Knight and Nicole Varga are both co-founders of Knight Varga Interiors. With two decades of collective experience, this multi-award winning design firm has become known and sought after for crafting meticulously designed interiors. The firm provides complete bespoke residential design services.

knightvarga.com
@knightvarga

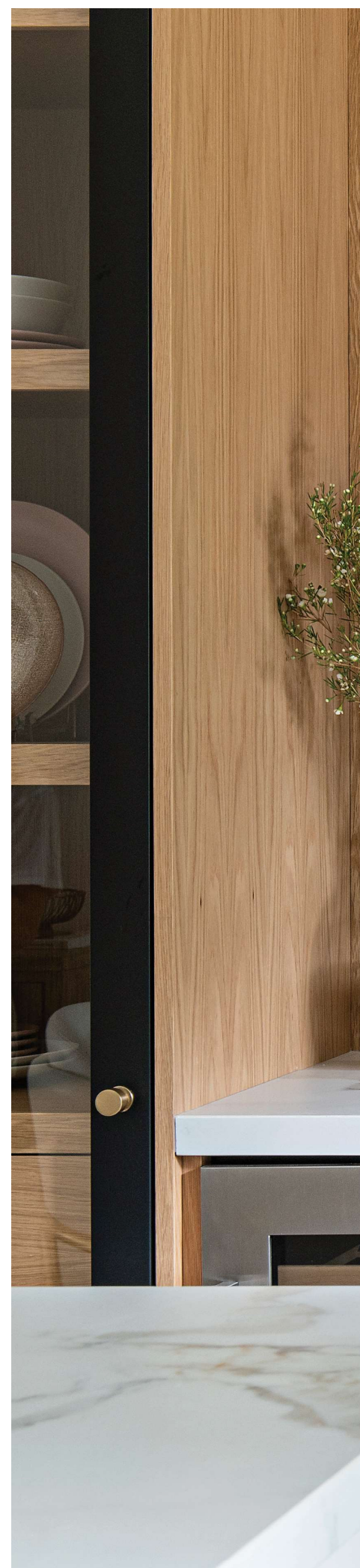


JESSICA CINNAMON

Jessican Cinnamon Design Inc.

Jessica Cinnamon is the Principal Designer and founder of Jessica Cinnamon Design Inc. The firm is a multi-disciplinary design company known for creating stylish and thoughtfully arranged interiors. With a holistic approach to design spaces that are tailored, enduring, and genuinely personal, they provide services throughout the Greater Toronto Area, Chicago, and Los Angeles.

jessicacinnamon.com
@jessica_cinnamon_design



NATURE AND NURTURE

A Home Renovation

Written by JESSICA CINNAMON
Design by JESSICA CINNAMON DESIGN INC.
Photography by STEPHANI BUCHMAN

The design world has seen a palpable shift toward the organic and the authentic. This trend isn't merely an aesthetic choice but a profound reflection of our innate desire to connect with nature in an increasingly urbanized world. From rustic retreats to modern abodes, the proliferation of natural materials has become a hallmark of contemporary interior design, offering a harmonious blend of practicality and aesthetics. At the heart of this movement lies the enduring allure of wood.

Historically preferred for its practicality and availability but more recently for its style and sustainability, wood has transcended its rustic origins to become a foundational element in modern homes, from ceiling to floor and everywhere in between. Its versatility is arguably its biggest attraction, ranging from the rich, warm tones of mahogany to the light, airy grains of oak. Its inherent beauty and timeless appeal bring a sense of warmth and authenticity to any space, including one of my most recent designs—a 4,900-square foot home for a family of five, which needed a major facelift and a reimagined floor plan. Our work encompassed a complete main-floor renovation, a second-floor principal suite, and basement upgrades that elevated the underground.



Common Challenges Call for Creative Solutions

The original home was dark and compartmentalized, so we opened up the floor plan to brighten the space. The kitchen was closed off from the living and dining room—a deliberate design feature of the past that has made way for open, social spaces in the modern home. We removed the walls between the living room, dining room, and kitchen along with all bulkheads. There were also several structural elements that we could not change and had to be incorporated into the design. The solution came in the form of functional millwork to hide structural and mechanical components. We also put a lot of thought into the ceiling designs, ensuring that the open floor plan felt fluid given the varying ceiling heights.

Pro Tip: Although open-concept layouts are desired, they do require some planning to ensure they remain visually organized and functional. Establish “zones” within the open area and outfit each one with its own dedicated grouping of furniture, lighting, and accessories. Adding an area rug can also help to distinguish the zone. This will give it a distinct purpose within the broader space. Maintain a uniform flooring material throughout to ensure good visual flow.

Kitchen storage and organization was another set of

obstacles to overcome, as is frequently the case in a busy family home like this one. We incorporated smart design features such as an appliance garage above the counter on a pullout tray, a magic corner below, a kitchen aid lift, a charging drawer, and hidden storage below the island counter. A glass display cabinet served to visually connect the areas, while incorporating existing structural elements and HVAC. Crossing the line between feature and function were the wine display and a coffee station with a pullout cutting board and pocket door above.

Meanwhile, the family room suffered from imbalance. We gave it a new layout, shifting the fireplace to be centered and opting for a more modern, linear gas unit. Technically, we made the family room smaller in square footage, but the new layout is more practical for TV viewing and conversation, outfitted with the two sofas and two swivel chairs. The decorative, custom-made ceiling fixture is sprawling and fluid, well-suited to the space, and artfully crafted so as not to obstruct the view to the TV. Because this space was made for living the furniture choices were simple, featuring clean lines, minimal details, and neutral palettes. We also incorporated a custom wool rug that is comfortable and durable underfoot.



Nature Takes Center Stage

Organic accents serve as focal points, adding warmth, depth, and character to every room. We used a combination of woods and natural marbles and incorporated subtle textures throughout to create a layered warmth.

In the kitchen, a marble archway was integrated into the millwork. Inset brass inlay detail separates the durable, man-made quartz countertop workspace from the natural marble tabletop that hosts meals and guests.

In the family room, a dark, natural marble-clad fireplace towers to the ceiling, contrasting with the otherwise light room. The dark marble made its bold statement in other areas as well as a natural marble floating vanity with an integrated sink in the bathroom, a floor in the hallway, a feature wall in the mudroom (complete with a new dog shower), and as punctuated dark accents throughout.

Underfoot, natural hardwood flooring serves to carry the organic motif throughout the home while maintaining visual continuity between spaces.

Dark Meets Light

The light, neutral tones through the home are timeless, chosen to evoke a clean and bright aesthetic. Layered lighting was added to set a very deliberate mood of toned-down modernity and to enhance the visual impact of focal areas in the home. To maintain open sightlines and the free flow of light, we replaced the original closed-off staircase with a new, open-tread staircase that allows a clear view from the front door through to the back of the house.

There's no doubt that this house was already a home to my clients where they had made many wonderful memories over the years. As their needs and tastes change over time, my goal was to make the space more functional and stylish and a place for this family to continue to enjoy for years to come.

